

Touring HGV eCall & e-CMR in Europe

William Dénous
IRU Projects



This project is funded
by the European Union

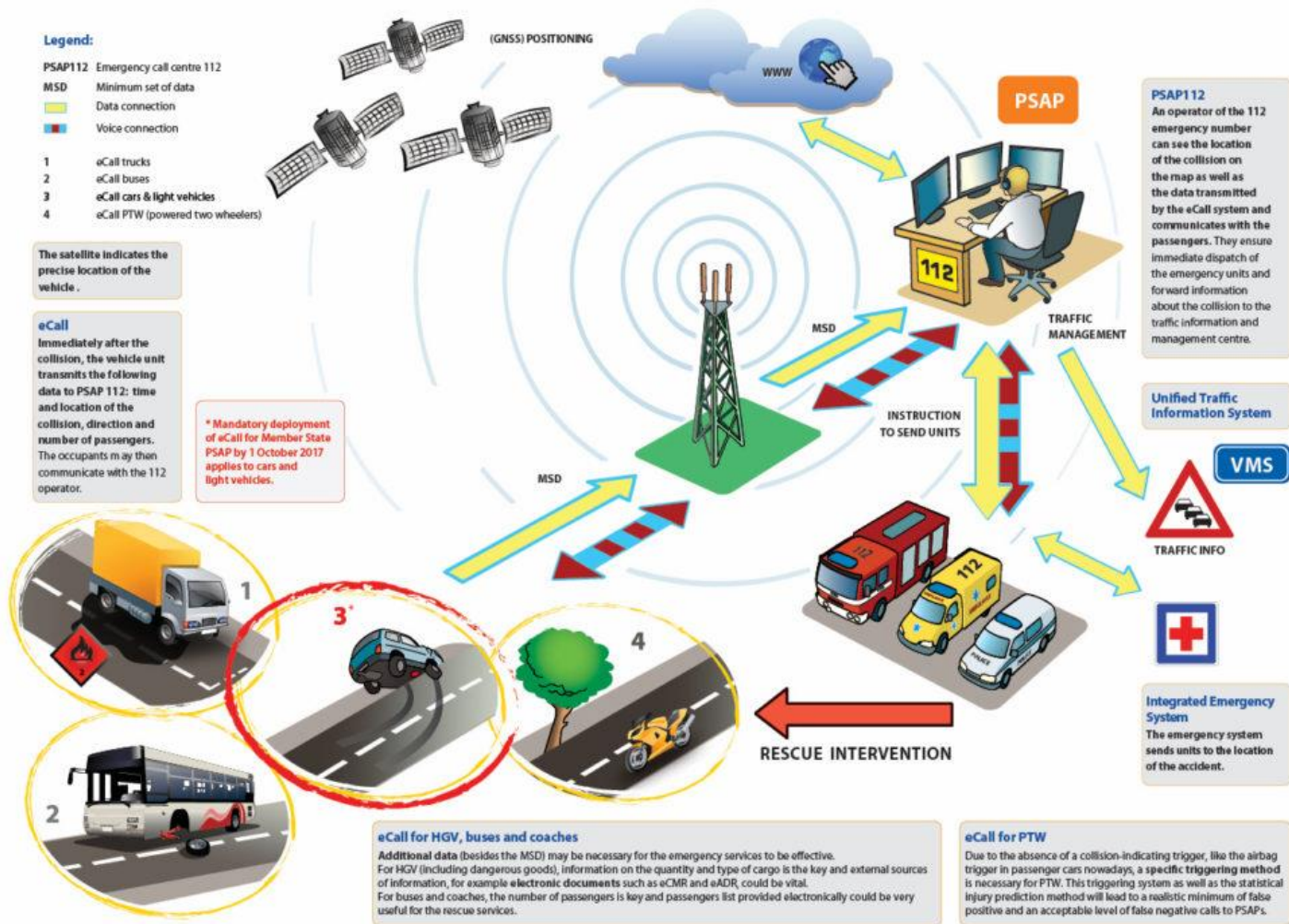


eCall

- eCall: emergency call triggered manually by vehicle occupants or automatically by in-vehicle sensors when collision is detected.
- When activated, the system dials 112 which sets up a voice connection with a Public Safety Answering Point (PSAP).
- A minimum set of data (MSD) is sent to the PSAP: accident geo-location + vehicle make and model
- This info is forwarded to a traffic information center and to emergency services.
- All new cars and vans sold in the EU will have to have eCall installed from 31st March 2018.



How eCall works



eCall for HGV

- Information on **goods transported**

[illegible]

eCall for HGV

- Information on **goods transported**
- Especially relevant for dangerous goods transport
- Needs to be up-to-date (carrier!)
- Details on consignor/consignee (including phone contact)
- Data can be stored in IVS or retrieved from external database
- Should be accessible only in case of incident (eCall)
- e-CMR can be the common format
- Several custom local dangerous goods database implementations



eCall for buses and coaches

- Number of passengers





eCall for buses and coaches

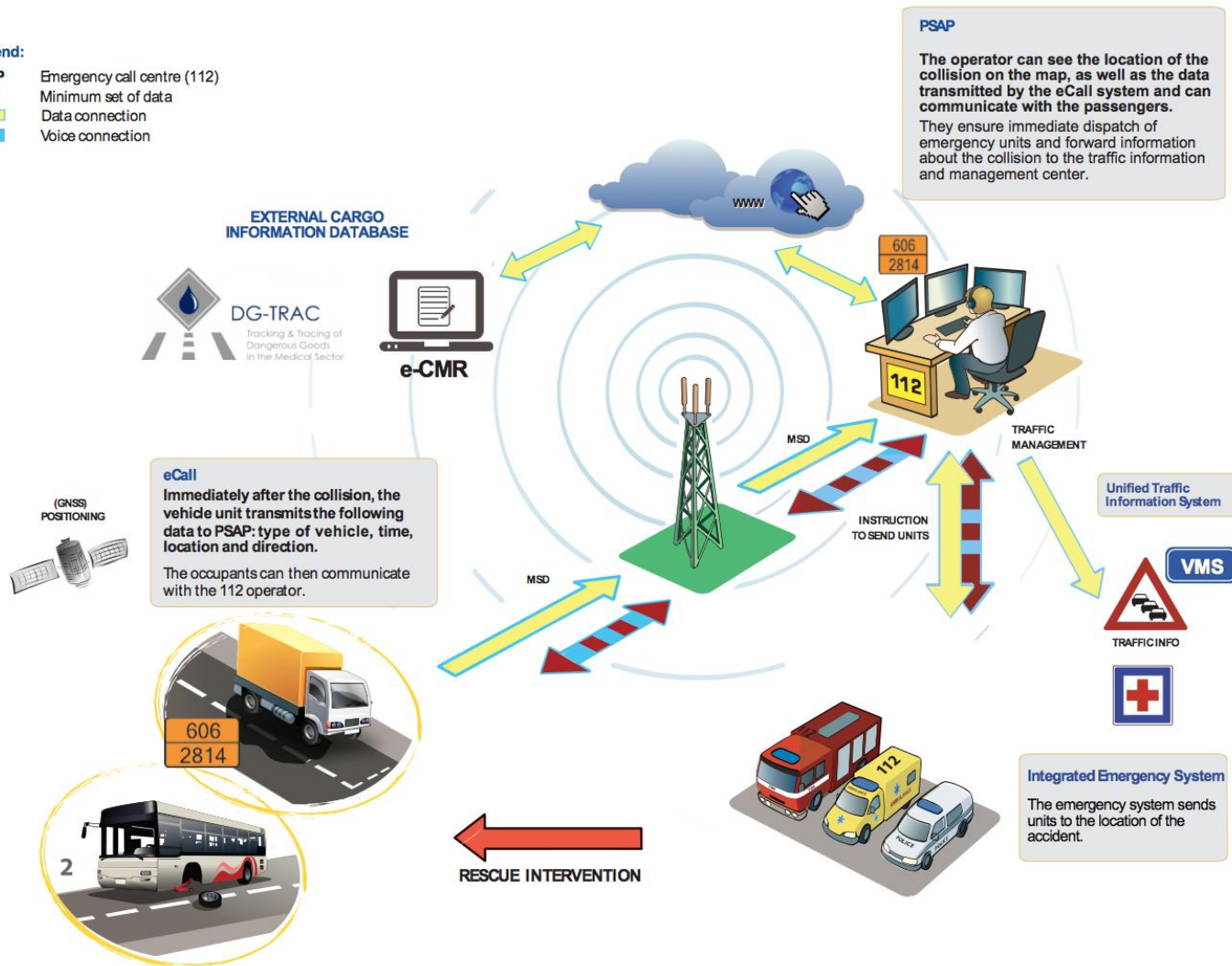
- **Number of passengers**
- Linked to number of tickets sold
- Ticketing not always digitalized
- Input by the driver
- Implementation of new solutions can be costly
- Personal data / PNR: privacy issues



eCall for HGV, buses & coaches

Legend:

- PSAP** Emergency call centre (112)
- MSD** Minimum set of data
-  Data connection
-  Voice connection



I_HeERO project

- I_HeERO (Infrastructure Harmonised eCall European Pilot) aims at preparing project Member States' PSAPs for deployment of 112 eCall for two-wheelers, HGVs and long distance buses & coaches.
- Project co-funded by EU: 1st Jan. 2015 - 31st Dec. 2017
- Project Member States: Bulgaria, Cyprus, the Czech Republic, Finland, Germany, Greece, Ireland, Italy, Portugal, Romania and Slovenia.
- 58 commercial partners and 26 associated partners in total.

